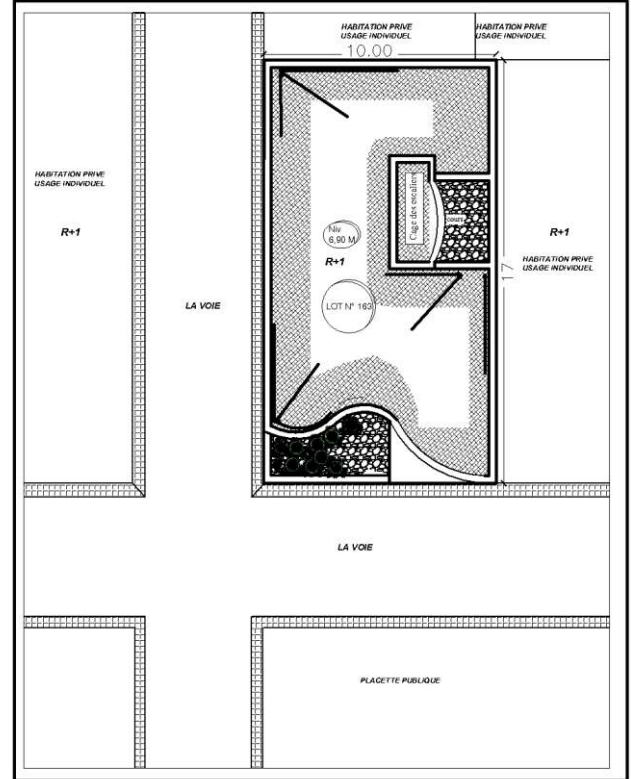
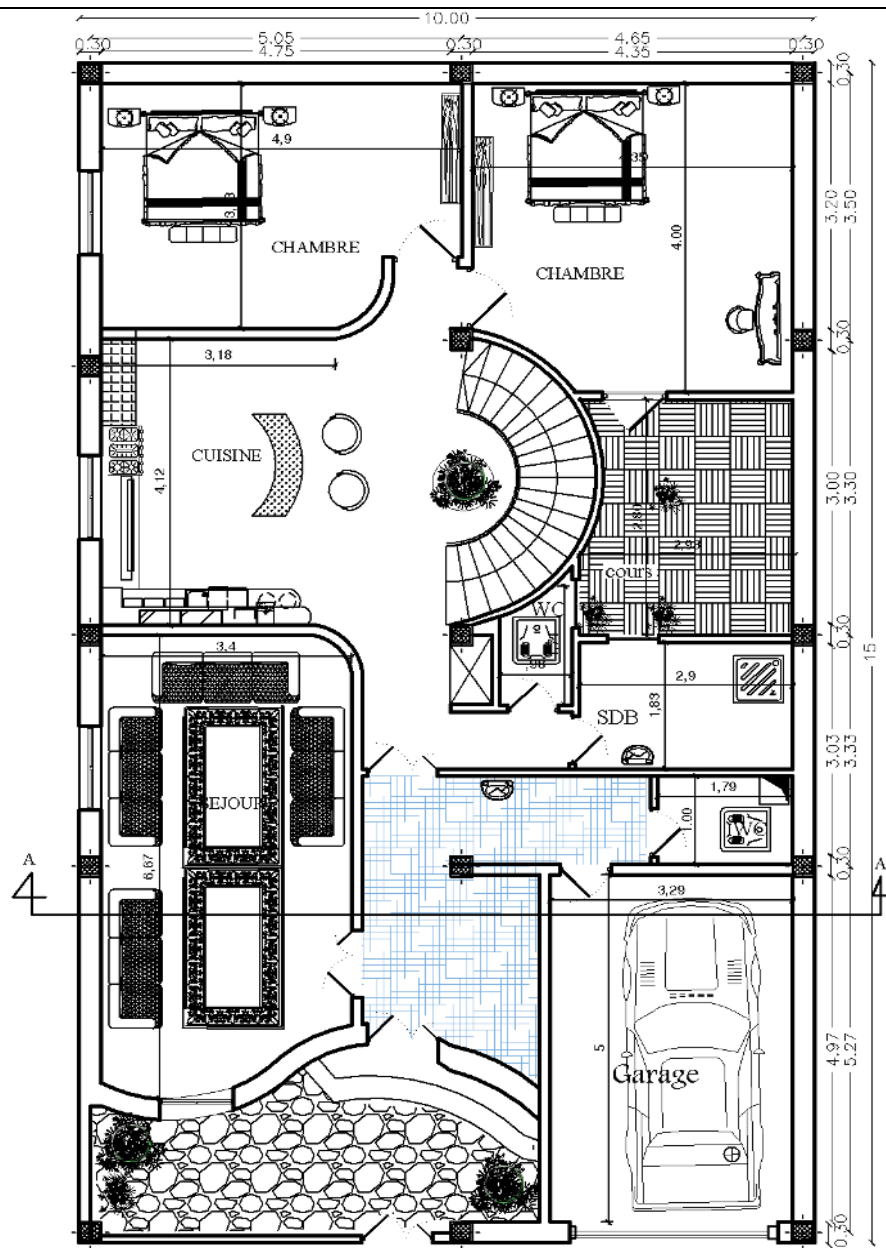


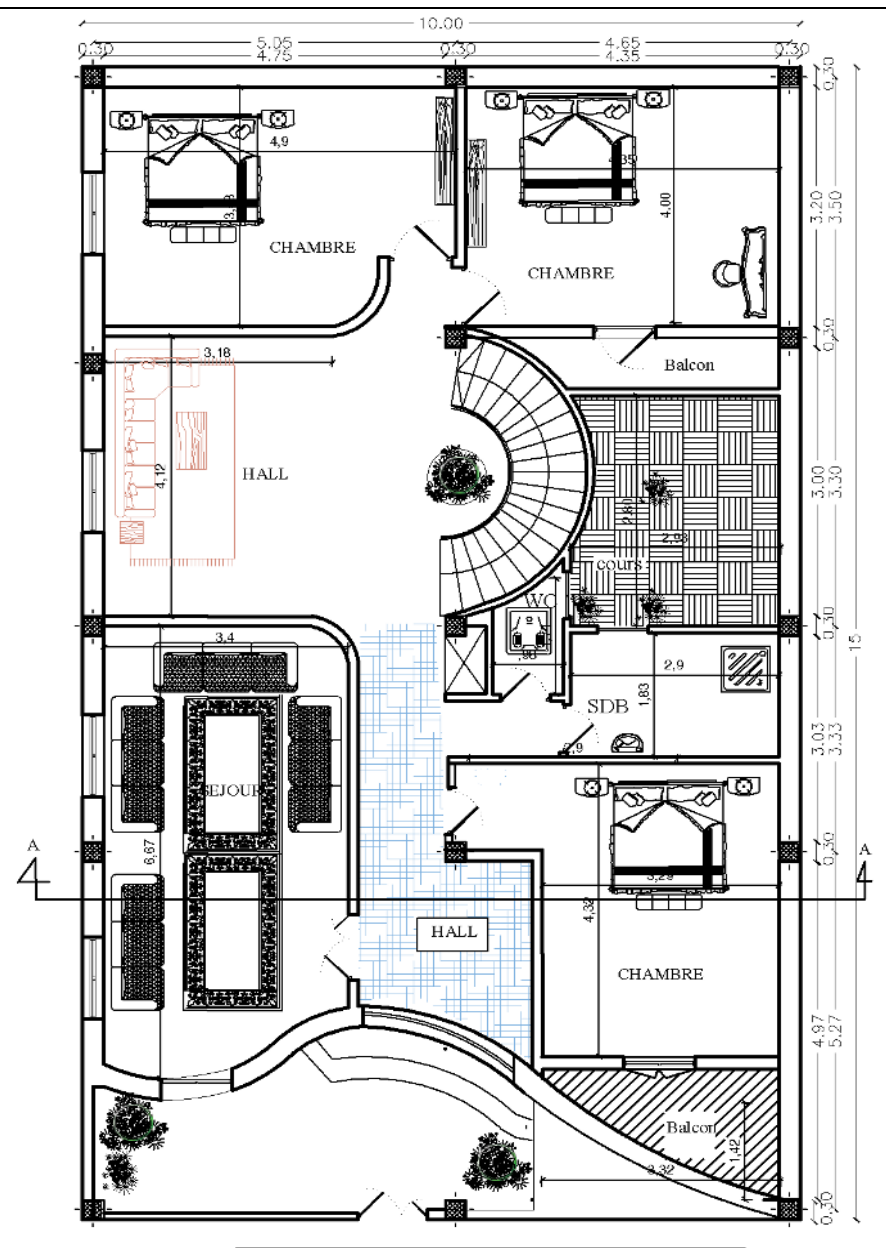
plan de situation



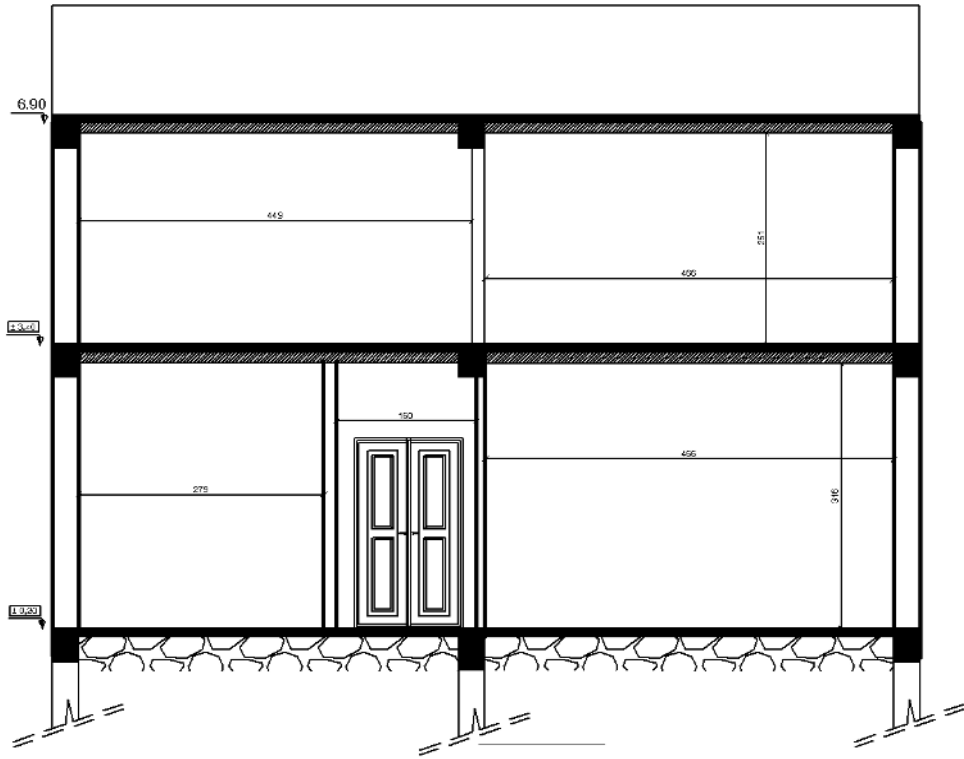
PLAN DE MASSE



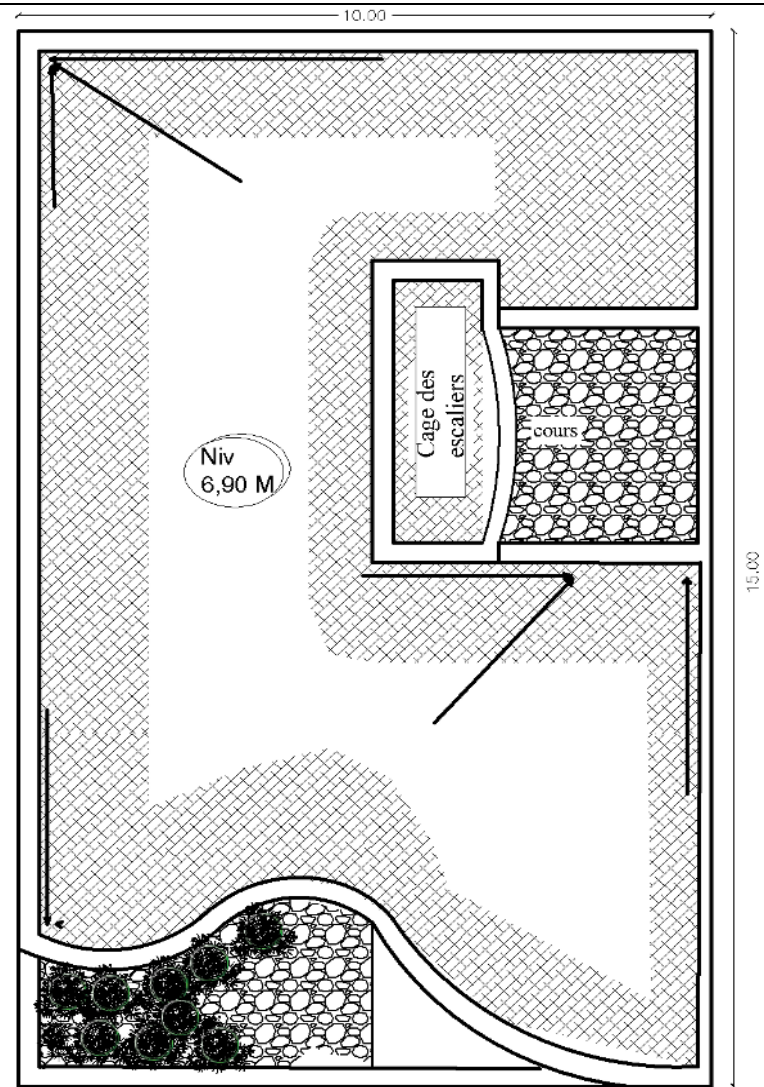
PLAN DE R.D.C



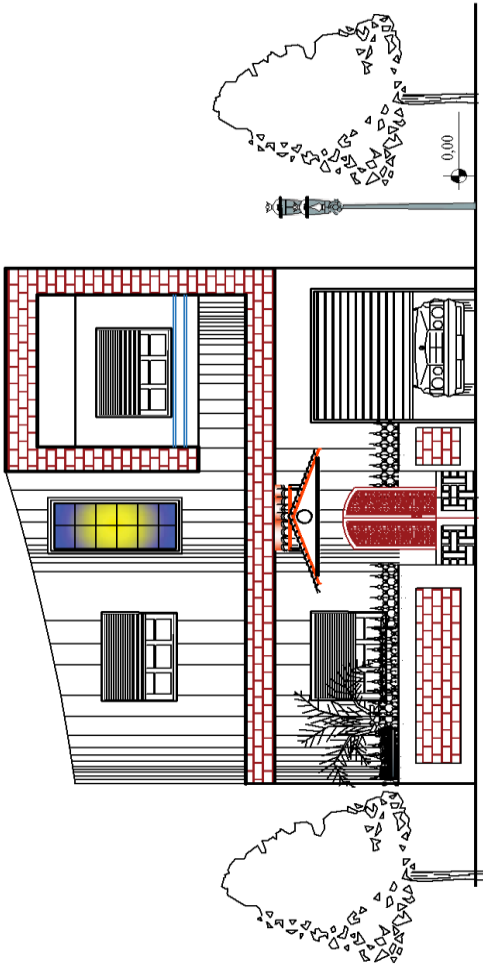
PLAN DE 1er ETAGE



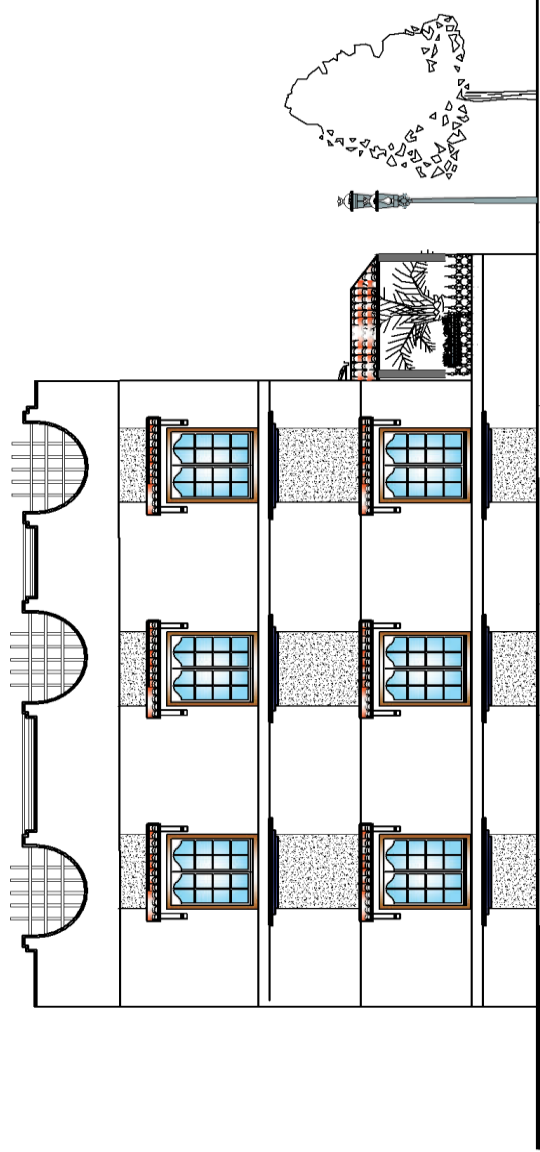
LA COUPE A*A



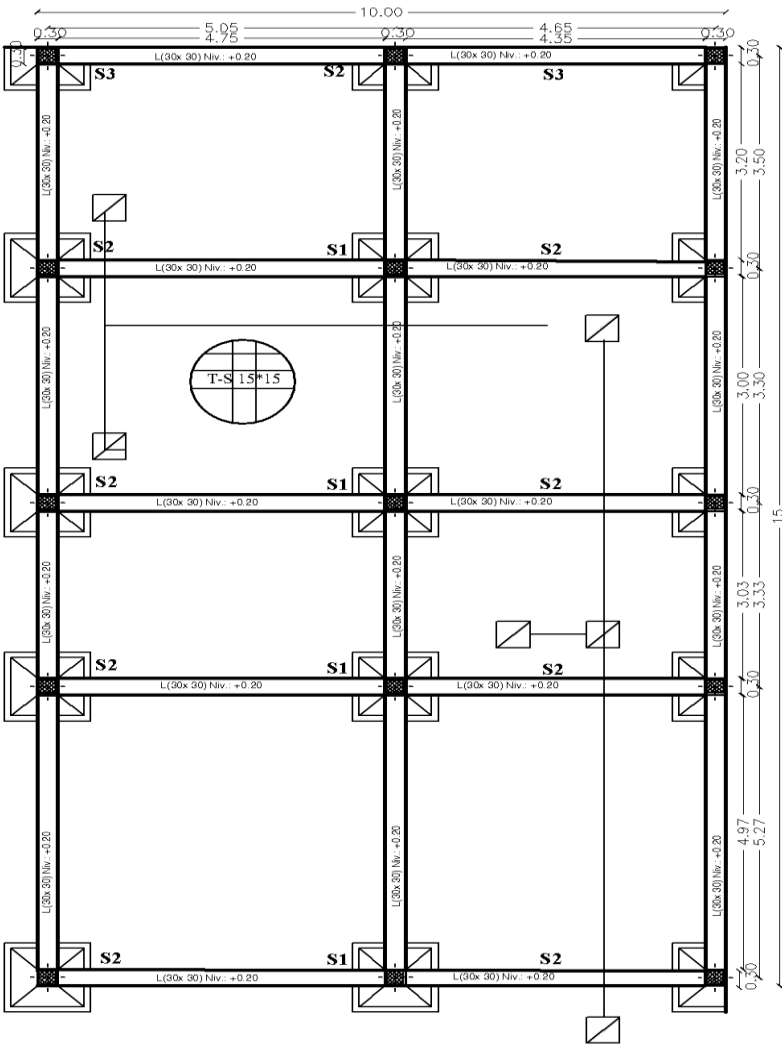
PLAN DE TERRASSE



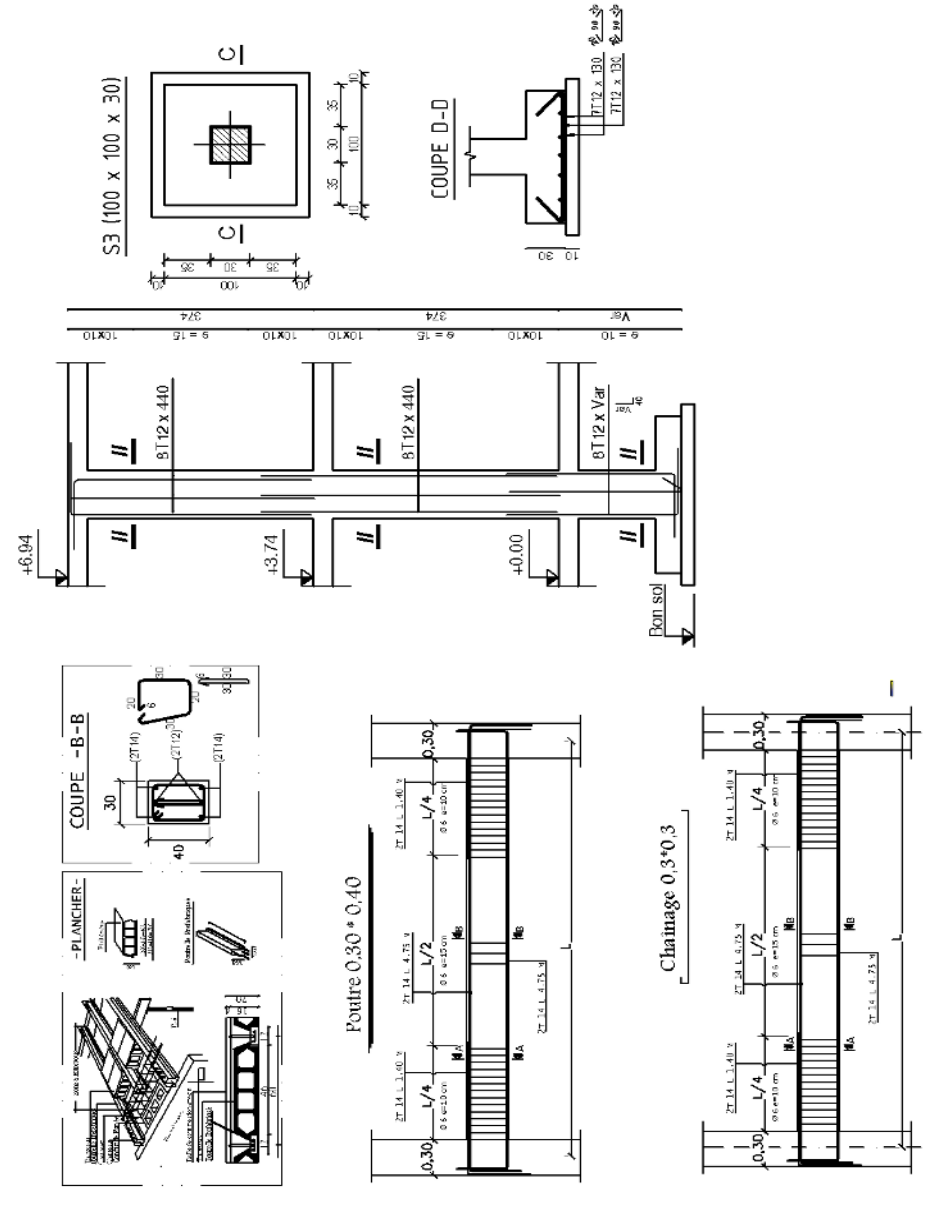
LA FACADE PRINCIPALE



LA FACADE LATERALE



PLAN DE FONDATION ET ASSAINISSEMENT



DETAILS GENIE CIVIL