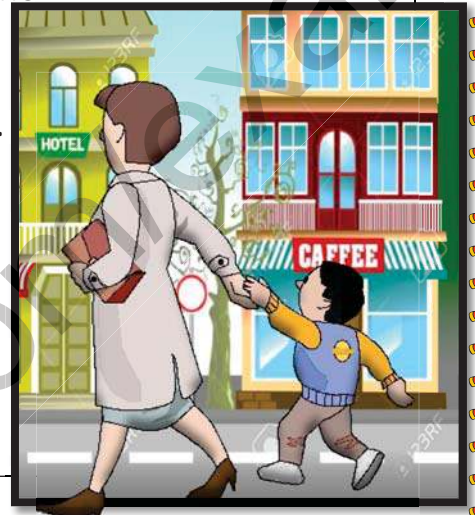


# THE SECOND TERM ENGLISH EXAM

**Amel:** Hello, Can I ask you a question, please?  
**Passer-by:** Hello, yes of course!  
**Amel:** I am a teacher of English , I would like to buy some English books Can you show me the way to the Library, please?  
**Passer-by:** It is not far from here. You go straight on Oxford Street, Then you turn right at the third corner.  
**Amel :** Great!  
**Passer-by:** The Library is behind the post office and it is next to the shoe shop !  
**Amel:** Thank you very much, sir!  
**Passer-by :** You're welcome.  
**Amel:** Have a nice day .  
**Passer-by** have a nice day , too .



## I - PART ONE ( 7PTS)

### A / I Read and Do :

- ❖ **Activity one:** I choose the best the title ..... : (1pt)
  - a- In the street                      b- showing the way                      c- in the supermarket
- b- The text is a : ..... (1pt)
  - a- Email                      b- Blog                      c- Dialogue
- ❖ **Activity Two:** I read then answer with "true" or "false": (3pts)
  - 1-Amel is asking the way to the Library .....
  - 2-She wants to sell some books .                      .....
  - 3- The Library is next to the shoe shop .....



- ❖ **Activity three:** I find in the text the opposite of the words below: (2pts)
  - Near ≠.....
  - Left ≠.....

### B / I Practise (8pts)

- ❖ **Activity one:** I complete the following table ( 2pts)

Singular	Plural
- A Glass	- .....
- A Sheep	- .....
- A Foot	- .....
- A Mouse	- .....



**Activity two: I Add a word to the list : ( 2pts)**

- Library – Bakery – Butcher - .....
- Hand – Foot – Ear - .....
- Pear – Watermelon – Apple .....
- Water – Milk – Juice .....



**Activity three: I complete the following questions : (2pts)**

A : .....

B : there are four pineapples in the basket .

A : .....

B : There is a jar of honey in the fridge .



**Activity three: I classify these words according to their sounds: (2pts)**

School – Choose – Shop – Chef .

/ʃ/	/tʃ/	/k/
.....	.....	.....
.....	.....	.....

**II - PART TWO :**

**I learn to integrate (5pts)**

You are the town and you want to go the hospital, but you don't know the way.

Write a short dialogue between you and a passer-by .Where you ask him about **the way** using the **directions**.

**ME :** Hello, can you..... me the ....to the ....., please?

**Passer-by :** Good morning! Yes , .....

**ME:** .....

**Passer-by:** .....

**ME :** .....

**Passer-by :** .....



**THANKS**

Your teacher : Mr.Bassi